



INDOFINE Chemical Company, Inc.

121 Stryker Lane, Bldg. 30, Suite 1 • Hillsborough, NJ 08844 • U.S.A.

Phone: (908) 359-6778 • FAX: (908) 359-1179

website: www.indofinechemical.com

e-mail: chemical@indofinechemical.com

CERTIFICATE OF ANALYSIS

Catalog Number: 06-1265

Product Name: **THEAFLAVIN-3'-GALLATE**

CAS Number: [28543-07-9]

Lot Number: 1606843

Chemical Formula: C₃₆H₂₈O₁₆

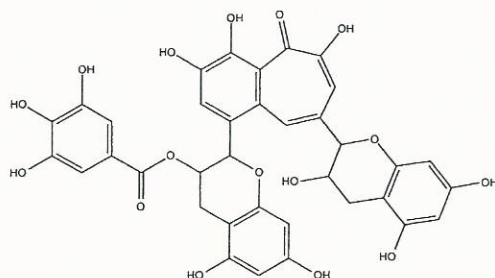
Molecular Weight: 716.6

Loss on Drying: 1.2%

Appearance: Brick red powder

Storage: Store in a cool, dry place. Protect from light.

Purity(HPLC): 95.35%





INDOFINE Chemical Company, Inc.

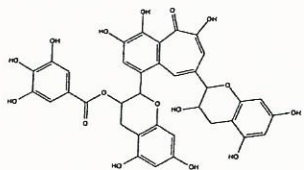
121 Stryker Lane, Bldg. 30, Suite 1 • Hillsborough, NJ 08844 • U.S.A.

Phone: (908) 359-6778 • FAX: (908) 359-1179

website: www.indofinechemical.com

e-mail: chemical@indofinechemical.com

HPLC ANALYSIS



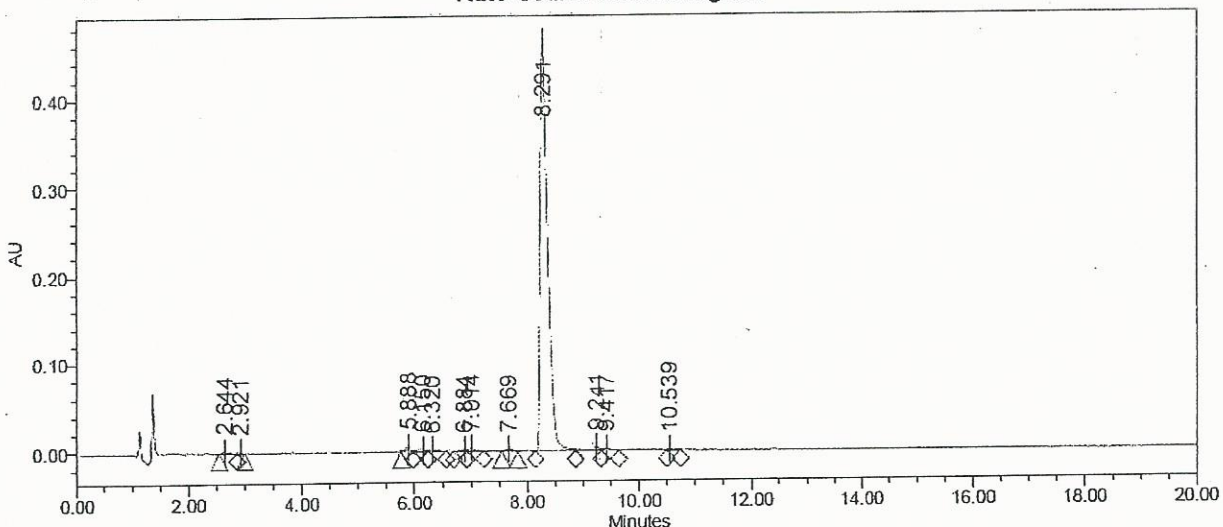
Catalog No.: 06-1265
Product Name: Theaflavin-3'-gallate
Lot No.: 1606843

SAMPLE INFORMATION

Sample Name: Theaflavin-3'-gallate
Sample Type: Unknown
Vial: 1:B,1
Injection #: 1
Injection Volume: 10.00 ul
Run Time: 20.0 Minutes

Sample Set Name: Theaflavin-3'-gallate
Acq. Method Set: Samples
Processing Method: PDA 270.0 nm
Channel Name: 270.0nm
Proc. Chnl. Descr.: PDA 270.0 nm

Auto-Scaled Chromatogram



Peak Results

	Name	RT	Area	% Area	USP Plate Count	USP Resolution
1		2.644	14055	0.31	6986.13	
2		2.921	4977	0.11	11536.97	2.13
3		5.888	32347	0.72	22493.79	19.59
4		6.150	21576	0.48	7849.14	0.97
5		6.320	13973	0.31	16107.48	0.48
6		6.884	9715	0.22		
7		7.014	21373	0.47	21361.76	
8		7.669	14703	0.33	33546.78	2.88
9		8.291	4300818	95.35	18237.57	2.41
10		9.241	43841	0.97	23443.35	3.67
11		9.417	24794	0.55		0.66
12		10.539	8172	0.18	768532.11	7.00